

1821 Briv

Steel - Dome head

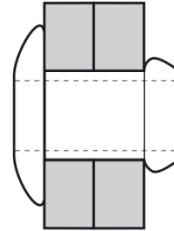
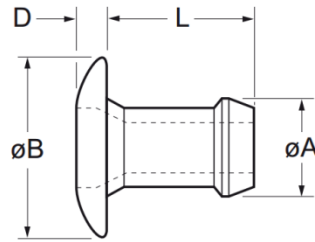
3.2 mm (1/8") - 6.0 mm (.236")

Features

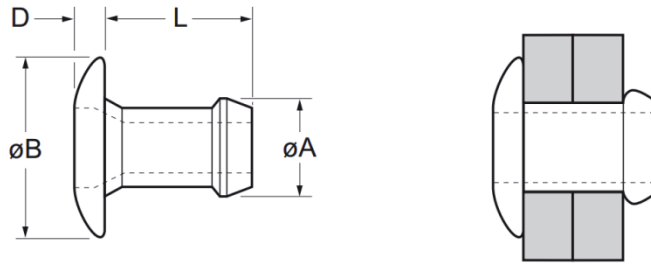
- Bulbed tail and foreshortening of the fastener during installation ensures consistent high clamp and shear
- Bulbed tail and large head style provide a large bearing area for soft materials
- Tapered tail for ease of hole entry
- Expands radially during installation to ensure maximum hole fill
- Lower in-place costs than welding or nail rivets
- Can be used to assemble many materials including metal, plastic and aluminium alloy
- Can be bowl fed for larger volume applications using automated equipment

Material

- Low carbon steel, zinc plated, clear trivalent passivated



Part No.	Size ø	Grip Range		Hole Size		øB max.	D max.	L max.	øA max.	Fasteners per pod ± 1	Shear (typical) kN	Tension (typical) kN
		min.	max.	min.	max.							
01821-00403	3.2 (1/8")	0.64	1.91	3.26	3.34	6.53	0.99	3.86	3.17	59	1.13	1.82
01821-00404		1.14	2.42					4.37		58		
01821-00405		1.65	2.87					4.87		50		
01821-00406		2.15	3.43					5.39		48		
01821-00408		3.17	4.45					6.41		42		
01821-00410		4.19	5.47					7.42		37		
01821-00412		5.20	6.48					8.44		33		
01821-00414		6.22	7.50					9.45		29		
01821-00416		7.24	8.51					10.46		26		
01821-00505		4.0 (5/32")	1.57					2.93		3.97		
01821-00506	2.15		3.43	5.41	49							
01821-00507	2.66		3.94	5.92	44							
01821-00509	3.68		4.96	6.94	39							
01821-00511	4.69		5.97	7.95	34							



Part No.	Size ø	Grip Range		Hole Size		øB max.	D max.	L max.	øA max.	Fasteners per pod ± 1	Shear (typical) kN	Tension (typical) kN
		min.	max.	min.	max.							
01821-00513	4.0 (5/32")	5.71	6.99	3.97	4.04	8.18	0.99	8.97	3.90	31	1.65	2.80
01821-00515		6.73	8.00					9.98		26		
01821-00517		7.75	9.02					11.00		24		
01821-00606	4.8 (3/16")	1.65	3.30	4.85	4.93	9.71	1.17	5.39	4.79	46	2.25	3.71
01821-00607		2.03	3.94					6.10		42		
01821-00609		3.68	5.21					7.37		35		
01821-00611		4.95	6.48					8.64		31		
01821-00613		6.22	7.75					9.91		27		
01821-00615		7.49	9.02					11.18		24		
01821-00617		8.76	10.29					12.45		22		
01821-06007	6.0 (.236")	2.66	3.94	5.94	6.02	11.55	1.35	6.93	5.93	37	2.58	4.22
01821-06009		3.68	4.95					7.94		33		
01821-06011		4.70	5.96					8.96		29		
01821-06013		5.71	6.98					9.98		26		
01821-06015		6.73	7.99					10.99		24		
01821-06017		7.74	9.01					12.00		23		

Assembly Applications

- Automotive
- Electronic components
- Sheet metal
- Electrical engineering
- Domestic appliances
- Furniture
- General light fabrication

